

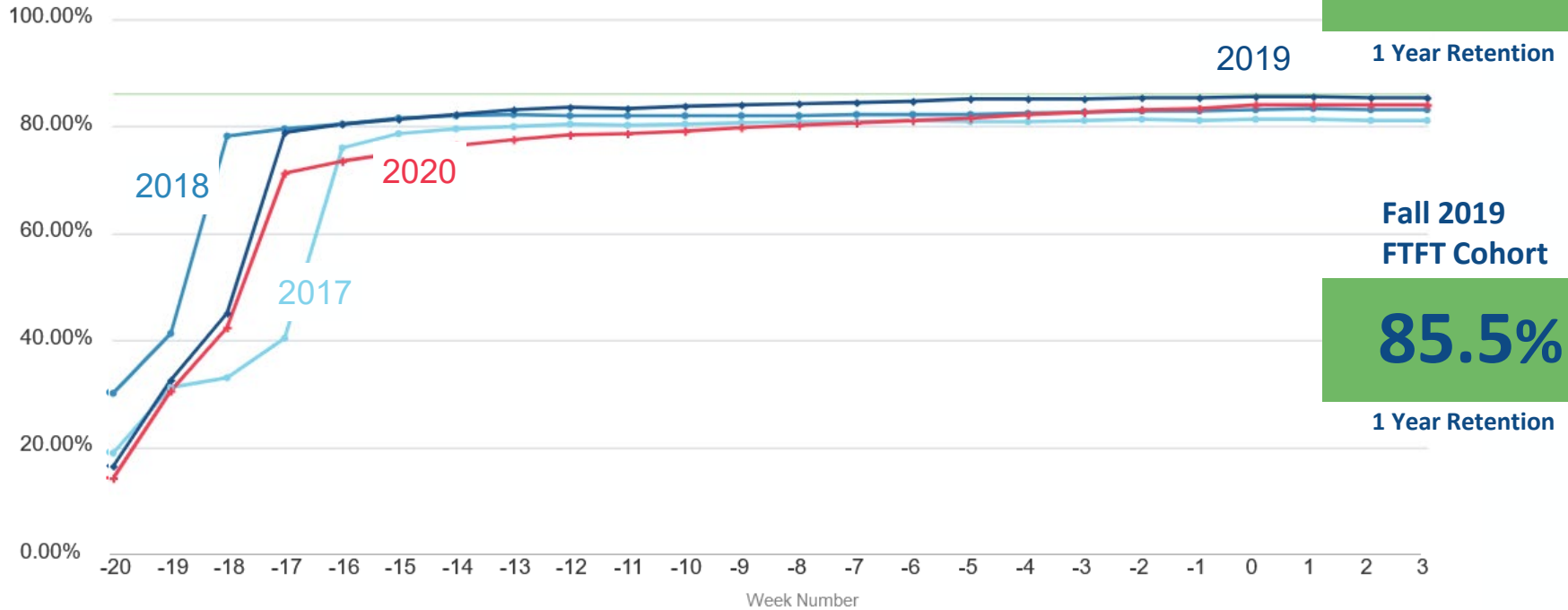
A large, three-dimensional, metallic 'A' logo is mounted on the side of a building with a glass and metal facade. The 'A' is illuminated from within, giving it a glowing appearance. The building's structure consists of vertical metal slats and glass panels. The background is a clear blue sky.

Provost's Report

Liesl Folks

*Senior Vice President for Academic
Affairs and Provost*

Fall 2021 - PIT Weekly FTFT Retention Rate



Fall 2020
FTFT Cohort

84.0%

1 Year Retention

Fall 2019
FTFT Cohort

85.5%

1 Year Retention

◆ Fall 2017, Headcount: 5,875
 ◆ Fall 2019, Headcount: 6,017
◆ Fall 2018, Headcount: 5,992
 ◆ Fall 2020, Headcount: 5,372

Census date is today!

Additional details available at: [Dashboards > Student > Retention > Weekly Retention Comparison](#)

COVID-19 Updates and Resources

- COVID Updates: covid19.arizona.edu – please link to this page often!!
- Faculty / Instructor Resources: provost.arizona.edu/content/pac
- Recent webinars;
 - Dr. Deepta Bhattacharya on “COVID-19 Vaccines and Variants: What We Know So Far.”
 - Dr. Kristen Pogreba-Brown “COVID-19 Positive Case Protocols and SAFER Contact Tracing”
- Watch the recordings here: provost.arizona.edu/content/campus-webinars



Temporary Modified Work Conditions

- Unit heads / chairs / directors are responsible for course modality decisions.
- Leaders are working to balance the evolving needs of individual instructors with our commitments to students.
 - Changes, where possible, may create ripple effects that take some time to resolve and implement.
- Links and more information on process are online here:
<https://hr.arizona.edu/coronavirus-information>

Student COVID Test-Positive Actions

1. Remind the student to monitor their symptoms and reach out to Campus Health if they have any concerns. Direct the student to follow the [CDC guidance](#) for isolation.
2. Remind the student of their obligation to complete the [SAFER notification form](#).
3. Remind the student of their obligation to [upload their positive test result](#) to the secure, HIPAA compliant Campus Health system, if their positive test was taken off campus.
4. If you are an instructor teaching an in-person course where a student(s) have voluntarily reported to you that they have tested positive, please complete the [Instructor Reporting Form](#) (IRF).
5. If you are supervising TAs or teaching personnel, refer to the [COVID-19 Workplace Positive Case Protocol](#).
6. Completing these five steps, particularly the [Instructor Reporting Form](#), will initiate the contact tracing process and allow you to get information and expert guidance from trained epidemiologists.

[COVID-19 Positive Case Notification Protocol for Students](#)